

Community Challenge

LowCVP 7th Annual
Conference

15th July 2010

Greg Archer,
Managing Director, LowCVP

Fraser Winterbottom,
Chief Operating Officer,
Energy Saving Trust

LowC^{VP}
low carbon vehicle partnership

Supported by

**ACT
TRAVELWISE**®

**What
GreenCar**


Global Action Plan
creating the climate for change



RAC
Foundation

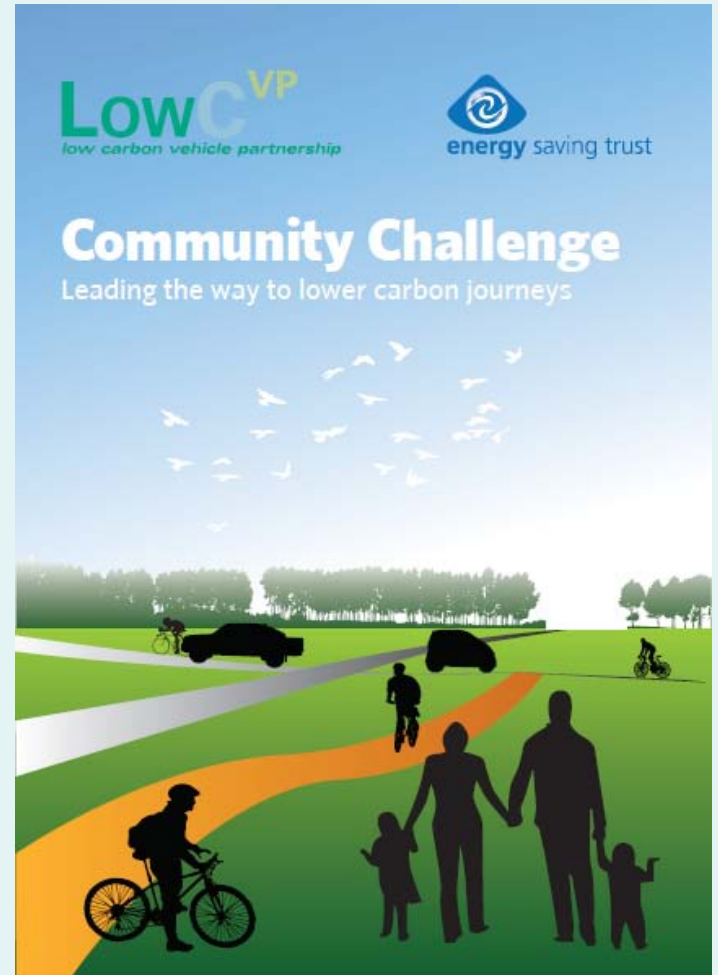


liftshare.com
Better together



What is the Community Challenge?

- ❑ A competition to stimulate local action towards lower carbon journeys.
- ❑ Cash prizes from £5,000 to £500 for community based projects that encourage:
 - Lower carbon vehicles and fuels
 - Smarter driving and eco-driving
 - Reducing car use



How were the winners selected?

- ❑ 83 applications
 - 23 shortlisted

- ❑ Judging criteria:
 - Originality?
 - Impact?
 - Carbon saving potential?
 - Applicant credibility?



Greg Archer
Managing Director , LowCVP



Sally Gold
Head of Social Investment and Sponsorship, Shell



Councillor Shona Johnstone
Cambridge County Council



Antonia Roberts
Director, Carplus



Philip Sellwood
Chief Executive,
Energy Saving Trust



Emma Stranack
Head of Marketing and Channels,
Department for Transport



Rhian Davies, ACT Travelwise

Community Challenge

Winners

Supported by

ACT
TRAVELWISE®

What
GreenCar


GlobalActionPlan
creating the climate for change



RAC
Foundation



liftshare.com
Better together

Major awards (£5000) winners

Cotswold Council for Voluntary Services



To examine alternative technologies and eco-driving approaches to improve fuel economy in their fleet of minibuses

Green for Go - Climate Squad

To embed long-term eco-driving habits in new & young drivers through peer-to-peer training & support



Oxcar

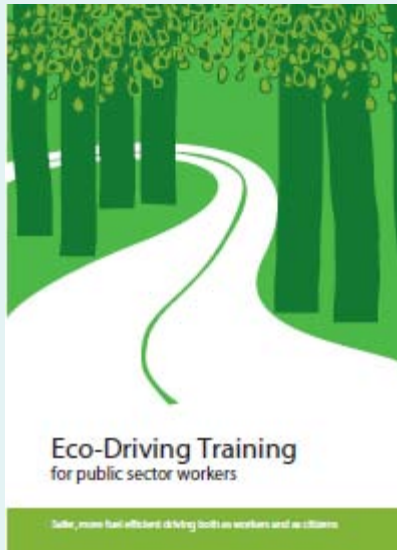


Car-club trialling the use of cars leased from members & other innovative approaches

Other award winners (£500 - £2500)

WiganRecycles (£2,500)

Efficient driving training to public sector workers delivered by the young unemployed



Broomfield Bike Beauties (£1,000)



Promoting cycling amongst school gate parents

ACE bicycle club (£1,000)

For bike mechanic training to repair and rebuild bicycles for vulnerable, homeless and isolated people to improve access to services



Spokes (£500)



Supporting cycling in the delivery of NHS health-care

Commended entries



easitNETWORK

Local low carbon journey champion that operates as a conduit between business and local government in East Surry and Crawley. Services include a bespoke car share website, bicycle loan scheme, public transport discounts and establishing 2 new bus routes



I Move It Ltd

Low cost delivery alternative utilising the empty boot space of motorists going that way. Web-based booking system allows customers to access low or no cost delivery quotes through an “Ebay-type” system.



School Travel Health Check

Uses GIS mapping to illustrate, document and predict travel to and from school for a range of interventions and calculate the benefits in carbon and calorie terms. Used by 29 local authorities, covering 1.5 million schools.

Community Challenge

Winners

Cotswold Council for Voluntary Services

Global Action Plan

Oxcar

WiganRecyclables

Broomfield Bike Beauties

ACE bicycle club

Spokes

EasitNETWORK

I Move it ltd

School Travel Health Check

Supported by

ACT
TRAVELWISE[®]

What
GreenCar



RAC
Foundation



liftshare.com
Better together



energy saving trust[®]

LowC^{VP}
low carbon vehicle partnership


GlobalActionPlan
creating the climate for change